

A studio photograph of two women posing in light pink underwear. The woman on the left has dark, wavy hair and is wearing a solid-colored bra and lace-trimmed briefs. The woman on the right has long, wavy blonde hair and is wearing a lace-trimmed bra and solid-colored briefs. They are both looking towards the camera with soft expressions. The background is a plain, light grey.

LINGADORE<sup>®</sup>  
Daily







# LINGADORE<sup>®</sup> *Daily*

“FEEL CONFIDENT, EVERY DAY, EVERYWHERE.”





I 400 PUSH-UP BRA  
*RED*  
ABCDE 65 - 85



I 400 PUSH-UP BRA  
*BLACK*  
ABCDE 65 - 85



I 400 PUSH-UP BRA  
*IVORY*  
ABCDE 65 - 85

# Push-Up Bra









**I400-I T-SHIRT BRA**  
*BLACK*  
ABCDE 65 - 90 / F 65 - 85



**I400-I T-SHIRT BRA**  
*IVORY*  
ABCDE 65 - 90 / F 65 - 85



**I400-I T-SHIRT BRA**  
*BLUSH*  
ABCDE 65 - 90 / F 65 - 85



**I400-I T-SHIRT BRA**  
*NAVY*  
ABCDE 65 - 90 / F 65 - 85



**I400-I T-SHIRT BRA**  
*TAUPE*  
ABCDE 65 - 90 / F 65 - 85



**I400-I T-SHIRT BRA**  
*ANTIQUE ROSE*  
ABCDE 70 - 90 / F 70 - 85



**I400-I T-SHIRT BRA**  
*RED*  
ABCDE 65 - 90 / F 65 - 85

# T-Shirt Bra





*"Perfect fit, perfect day."* 





**I400-1A T-SHIRT PLUS BRA**  
*IVORY*  
DEF 70 - 100 / G 70 - 95 /  
H 70 - 90



**I400-1A T-SHIRT PLUS BRA**  
*BLACK*  
DEF 70 - 100 / G 70 - 95 /  
H 70 - 90



**I400-1A T-SHIRT PLUS BRA**  
*BLUSH*  
DEF 70 - 100 / G 70 - 95 /  
H 70 - 90

# T-Shirt Plus Bra









*"Lingerie that grows with  
YOU."*







I400-3 T-SHIRT PUSH-UP BRA  
*BLUSH*  
ABCDE 65 - 85



I400-3 T-SHIRT PUSH-UP BRA  
*BLACK*  
ABCDE 65 - 85



I400-3 T-SHIRT PUSH-UP BRA  
*IVORY*  
ABCDE 65 - 85

# T-Shirt Push-Up Bra









**I400-5 FULL COVERAGE  
WIRE BRA**  
*BLACK*

BC 75 - 105 / D 70 - 105 /  
E 70 - 100 / F 70 - 95 / G 70 - 90



**I400-5 FULL COVERAGE  
WIRE BRA**  
*TAUPE*

BC 75 - 105 / D 70 - 105 /  
E 70 - 100 / F 70 - 95 / G 70 - 90



**I400-5 FULL COVERAGE  
WIRE BRA**  
*BLUSH*

BC 75 - 105 / D 70 - 105 /  
E 70 - 100 / F 70 - 95 / G 70 - 90

# Full Coverage Wire Bra



*"Straps that stay,  
day after day."*











**I400-5A FULL COVERAGE  
LACE BRA**

*IVORY*

BC 75 - 105 / D 70 - 105 /  
E 70 - 100 / F 70 - 95 /  
G 70 - 90 / H 70 - 85



**I400-5A FULL COVERAGE  
LACE BRA**

*BLACK*

BC 75 - 105 / D 70 - 105 /  
E 70 - 100 / F 70 - 95 /  
G 70 - 90 / H 70 - 85



**I400-5A FULL COVERAGE  
LACE BRA**

*RED*

BC 75 - 105 / D 70 - 105 /  
E 70 - 100 / F 70 - 95 /  
G 70 - 90 / H 70 - 85



**I400-5A FULL COVERAGE  
LACE BRA**

*ANTIQUE ROSE*

BC 75 - 105 / D 70 - 105 /  
E 70 - 100 / F 70 - 95 /  
G 70 - 90 / H 70 - 85



**I400-5A FULL COVERAGE  
LACE BRA**

*BLUSH*

BC 75 - 105 / D 70 - 105 /  
E 70 - 100 / F 70 - 95 /  
G 70 - 90 / H 70 - 85

# Full Coverage Lace Bra









**I400-5C FULL COVERAGE  
MOULD BRA**  
*BLUSH*  
BC 75 - 105 / D 70 - 105 /  
E 70 - 100 / F 70 - 95 /  
G 70 - 90



**I400-5C FULL COVERAGE  
MOULD BRA**  
*BLACK*  
BC 75 - 105 / D 70 - 105 /  
E 70 - 100 / F 70 - 95 /  
G 70 - 90



**I400-5C FULL COVERAGE  
MOULD BRA**  
*IVORY*  
BC 75 - 105 / D 70 - 105 /  
E 70 - 100 / F 70 - 95 /  
G 70 - 90

# Full Coverage Mould Bra





**I400-6 TRIANGLE PLUNGE BH**  
*BLACK*  
 C 75 - 95 / DEF 70 - 95 / G 90



**I400-6 TRIANGLE PLUNGE BH**  
*RED*  
 C 75 - 95 / DEF 70 - 95 / G 90



**I400P BRALETTE**  
*BLACK*  
 S - XXL

# Triangle BH & Bralette



*"Style with lingerie"*







I400P-I  
INVISIBLE PADDED SOFT BRA  
*BLACK*  
S - XL



I400P-I  
INVISIBLE PADDED SOFT BRA  
*BLUSH*  
S - XL

# Invisible Padded Soft Bra







*"Ready to slay in that  
off-shoulder dress."*





I 501 STRAPLESS BRA MEMORY  
FOAM  
*BLACK*  
ABCDEF 70 - 85



I 501 STRAPLESS BRA MEMORY  
FOAM  
*BLUSH*  
ABCDEF 70 - 85

# Strapless Bra Memory Foam





**I34I NON WIRE BRA**  
*BLACK*  
BCDEF 80 - 110 / G 75 - 95



**I34I NON WIRE BRA**  
*WHITE*  
BCDEF 80 - 110 / G 75 - 95



**I34I NON WIRE BRA**  
*BLUSH*  
BCDEF 80 - 110 / G 75 - 95



**I34I NON WIRE BRA**  
*IVORY*  
BCDEF 80 - 110 / G 75 - 95

# Non Wire Bra









*"Comfort and style"* 





*"All in one"* 





**I400B BRIEF**  
*BLACK*  
XS - 3XL



**I400B BRIEF**  
*IVORY*  
XS - 3XL



**I400B BRIEF**  
*BLUSH*  
XS - 3XL



**I400B BRIEF**  
*NAVY*  
XS - XXL



**I400B BRIEF**  
*TAUPE*  
XS - XXL



**I400B BRIEF**  
*ANTIQUE ROSE*  
XS - 3XL



**I400B BRIEF**  
*RED*  
XS - 3XL

# Brief







*"Joy in the details"*







**I400B-I**  
**HIGH WAIST BRIEF**  
*BLACK*  
S - 5XL



**I400B-I**  
**HIGH WAIST BRIEF**  
*BLUSH*  
S - 5XL



**I400B-I**  
**HIGH WAIST BRIEF**  
*IVORY*  
S - 5XL



**I400B-I**  
**HIGH WAIST BRIEF**  
*TAUPE*  
S - 5XL



**I400B-I**  
**HIGH WAIST BRIEF**  
*ANTIQUE ROSE*  
S - 5XL



**I400B-I**  
**HIGH WAIST BRIEF**  
*RED*  
S - 5XL

# High Waist Brief





**I 400B-3 LACE BRIEF**  
*BLACK*  
XS - XXL



**I 400B-3 LACE BRIEF**  
*BLUSH*  
XS - XXL



**I 400B-3 LACE BRIEF**  
*RED*  
XS - XXL



**I 400B-3 LACE BRIEF**  
*IVORY*  
XS - XXL

# Lace Brief













I400SH HIPSTER  
*BLACK*  
XS - 3XL



I400SH HIPSTER  
*IVORY*  
XS - 3XL



I400SH HIPSTER  
*BLUSH*  
XS - 3XL



I400SH HIPSTER  
*ANTIQUE ROSE*  
XS - 3XL



I400SH HIPSTER  
*NAVY*  
XS - 3XL



I400SH HIPSTER  
*TAUPE*  
XS - 3XL



I400SH HIPSTER  
*RED*  
XS - 3XL

# Hipster





I400T STRING  
*BLACK*  
XS - 3XL



I400T STRING  
*IVORY*  
XS - 3XL



I400T STRING  
*BLUSH*  
XS - 3XL



I400T STRING  
*NAVY*  
XS - 3XL



I400T STRING  
*TAUPE*  
XS - 3XL



I400T STRING  
*ANTIQUE ROSE*  
XS - 3XL



I400T STRING  
*RED*  
XS - 3XL

# String







*"You deserve to sparkle"*







I400CH CHEMISE  
*BLACK*  
XS - 4XL



I400CH CHEMISE  
*IVORY*  
XS - 4XL



I400CH CHEMISE  
*RED*  
XS - 4XL



I400CH CHEMISE  
*BLUSH*  
XS - 4XL

# Chemise









I400B-2 FULL LACE HIGH WAIST  
BRIEF  
*RED*  
XS - XL



I400B-2 FULL LACE HIGH WAIST  
BRIEF  
*BLACK*  
XS - XL



I400B-2 FULL LACE HIGH WAIST  
BRIEF  
*IVORY*  
XS - XL



I400D SUSPENDER BELT  
*BLACK*  
XS - XXL



I400D SUSPENDER BELT  
*IVORY*  
XS - XXL

# Spice up your Daily!



*"Cotton comfort, day after day."*



3607B-I  
3-PACK HIGH WAIST BRIEF  
*BLACK & BLUSH*  
S - 3XL



3609B  
3-PACK BRIEF  
*BLACK & BLUSH*  
XS - XL

*3-Pack*  
**Best Basics**







**“Designed for comfort,  
made for you.”**











**1800 SPACER BRA**  
*BLACK*  
ABCDE 70-90 / F 85



**1800 SPACER BRA**  
*POWDER*  
ABCDE 70-90 / F 85

# Spacer Bra













I800P-I BRALETTE WIRELESS  
*BLACK*  
C 75-95 / DEF 70-95 / G 90



I800P-I BRALETTE WIRELESS  
*POWDER*  
C 75-95 / DEF 70-95 / G 90

# Bralette Wireless





**I800B-3 LACE BRIEF**  
*BLACK*  
XS - 3XL



**I800B-3 LACE BRIEF**  
*POWDER*  
XS - 3XL



**I800SH SHORT**  
*BLACK*  
XS - 3XL



**I800SH SHORT**  
*POWDER*  
XS - 3XL



**I800T STRING**  
*BLACK*  
XS - 3XL



**I800T STRING**  
*POWDER*  
XS - 3XL

# Bottoms







**Fit  
Every Time.**





Comfort  
Any Place.











I410-1 CLEAN CUT T-SHIRT BRA  
BLACK  
ABCDE 70 - 90 / F 70 - 85



I410-2 CLEAN CUT BANDEAU TOP  
BLACK  
S - XL



I410P CLEAN CUT SINGLET  
BLACK  
S - XL



I410P-2 CLEAN CUT BRA TOP  
BLACK  
S - XL

# Clean Cut Tops





I 400T-I 2-PACK CLEAN CUT  
STRING  
*BLUSH*  
S - XL



I 400T-I 2-PACK CLEAN CUT  
STRING  
*BLACK*  
S - XL



I 400T-I 2-PACK CLEAN CUT  
STRING  
*RED*  
S - XL



I 400T-I 2-PACK CLEAN CUT  
STRING  
*IVORY*  
S - XL



I 400SH-I 2-PACK CLEAN CUT  
HIPSTER  
*BLUSH*  
S - XL



I 400SH-I 2-PACK CLEAN CUT  
HIPSTER  
*BLACK*  
S - XL



I 400SH-I 2-PACK CLEAN CUT  
HIPSTER  
*RED*  
S - XL



I 400SH-I 2-PACK CLEAN CUT  
HIPSTER  
*IVORY*  
S - XL

*2-Pack*  
**Clean Cut**













I400HWB-I 2-PACK CLEAN CUT  
HIGH WAIST BRIEF  
*BLUSH*  
S - XXL



I400HWB-I 2-PACK CLEAN CUT  
HIGH WAIST BRIEF  
*BLACK*  
S - XXL



I400HWB-I 2-PACK CLEAN CUT  
HIGH WAIST BRIEF  
*RED*  
S - XXL



I400HWB-I 2-PACK CLEAN CUT  
HIGH WAIST BRIEF  
*IVORY*  
S - XXL



I400CS-I 2-PACK CLEAN CUT  
SHORTS  
*BLUSH*  
S - XL



I400CS-I 2-PACK CLEAN CUT  
SHORTS  
*BLACK*  
S - XL

*2-Pack*

**Clean Cut**



**The perfect shape,  
all day long.**











I400SW-1 HIGH WAIST BRIEF  
*BLUSH*  
S - 3XL



I400SW-1 HIGH WAIST BRIEF  
*BLACK*  
S - 3XL



I400SW-2 HIGH WAIST SHORTS  
*BLUSH*  
S - 3XL



I400SW-2 HIGH WAIST SHORTS  
*BLACK*  
S - 3XL



I400SW-3 HIGH WAIST SKIRT  
*BLUSH*  
S - XL



I400SW-3 HIGH WAIST SKIRT  
*BLACK*  
S - XL

# High Waist











# Accessories

“STYLE SOLUTIONS FOR EVERY WARDROBE.”



*Scan the QR codes for an instruction movie*



# Clever Tricks



## AC003 COMFORT STRAPS (1 PCS)

BLUSH  
S/M - L/XL

ELIMINATES DEEP SHOULDER GROOVES CAUSED BY BRA STRAPS, PREVENTS BRA STRAPS FROM SLIPPING AND THE SUPER-SOFT SILICONE CUSHIONS RELIEVE PRESSURE AND PAIN ON YOUR SHOULDERS.

### HOW TO USE:

JUST SLIDE YOUR BRA INTO OUR SPECIALLY DESIGNED BRA STRAP CUSHION CHANNELS. CLEAN WITH WATER AND MILD SOAP.

MATERIAL: 100% SILICONE



## AC006 INVISIBLE BRA STRAPS (2PCS)

TRANSPARENT  
ONE SIZE

HIDES BRA STRAPS. EASY TO USE ON EVERY BRA WITH DETACHABLE STRAPS.

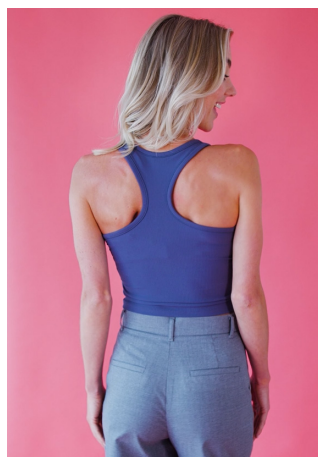
### HOW TO USE:

FIRST REMOVE YOUR EXISTING BRA STRAP, CHOOSE THE SIZE THAT FITS. ATTACH THE INVISIBLE BRA STRAPS TO THE BRA AND ADJUST IT IF NEEDED. CLEAN WITH WATER AND MILD SOAP.

MATERIAL: 100% SILICONE



# Clever Tricks



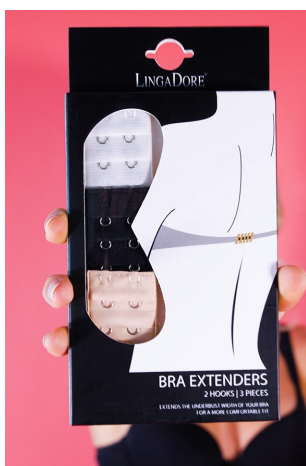
**AC007 BRA CLIPS (3 PCS)**  
*MIX COLOUR*  
ONE SIZE

CHANGE YOUR NORMAL BRA INTO A RACERBACK BRA.

## HOW TO USE:

FIRST YOU WILL NEED TO LOOSEN THE STRAPS A BIT FROM HOW YOU WOULD NORMALLY HAVE THEM. THEN JUST CLIP IT ONTO YOUR BRA STRAPS, SLIDE IT DOWN AND THE BRA STRAPS ARE INSTANTLY HIDDEN. CLEAN WITH WATER AND MILD SOAP.

MATERIAL: 100% POLYPROPYLENE



**AC009 & AC010 BRA EXTENDER (3-PACK)**  
*MIX COLOUR*  
ONE SIZE

EXTENDS THE UNDERBUST WIDTH OF YOUR BRA FOR A MORE COMFORTABLE FIT.

## HOW TO USE:

SIMPLY ATTACH THE EXTENDER TO THE BACK CLOSURE OF THE BRA. WAS VERY CAREFULLY AT 30 DEGREES.

MATERIAL: 100% POLYESTER  
LINING: 100% COTTON



# Clever Tricks



AC023 INVISIBLE STRING (1 PCS)  
BLACK & BLUSH  
*ONE SIZE*

THE INVISIBLE THONG ENSURES NO FABRIC IS SHOWING THROUGH YOUR EVENINGWEAR OR FINE FABRICS.

## HOW TO USE:

CLEAN YOUR SKIN, REMOVE THE PROTECTIVE LINER FROM THE INVISIBLE STRING, AND GENTLY PRESS IT IN PLACE.  
CLEAN WITH WATER AND MILD SOAP.

MATERIAL: CHINLON 85%, SPANDEX 15%



# Tape Solutions



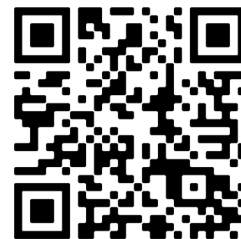
**AC008 FASHION TAPE**  
WHITE / ONE SIZE / 310CM

THE SECRET WHEN IT COMES TO KEEPING YOUR OUTFIT IN PLACE.

#### HOW TO USE:

CLEAN YOUR SKIN, REMOVE THE PROTECTIVE LINER FROM THE TAPE AND GENTLY PRESS IT IN PLACE. SMOOTH OUT ANY BUBBLES FROM THE EDGE. ONE TIME USE.

MATERIAL: 100% POLYAMIDE



**AC034 BODY TAPE**  
BLACK, BROWN & BLUSH  
5CM / 5M

ALLOWS YOU TO LIFT YOUR BREASTS WITHOUT WEARING A BRA!

#### HOW TO USE:

FIRST CLEAN THE SKIN OF YOUR BREASTS SO THAT NO TRACES OF LOTION OR PERFUME REMAIN. YOU CAN CUT THE TAPE TO YOUR DESIRED LENGTH AND USE IT IN MANY DIFFERENT WAYS WHILE CREATING THE PERFECT CLEAVAGE AND LIFT. REMOVE THE BOTTOM PART OF THE PAPER LINING FROM THE TAPE VERY CAREFULLY. ADHERE THE TAPE TO YOUR BREAST, THEN SLOWLY REMOVE THE REMAINING PART OF THE PAPER WHILE MOVING UPWARDS. LIFT THE BREAST BY PULLING THE TAPE UPWARDS AND THEN ADHERE TO THE SKIN. ONE TIME USE.

MATERIAL: 95% COTTON, 5% SPANDEX



# Nipple Covers & Lift Solutions



AC001 SILICON NIPPLE COVERS  
BLUSH / ONE SIZE

THE NIPPLE COVERS ARE MADE WITH ULTRA THIN EDGES AND CAN BE WORN WITH OR WITHOUT A BRA. THEY ARE INVISIBLE UNDER CLOTHES.

## HOW TO USE:

CLEAN YOUR SKIN, REMOVE THE PROTECTIVE LINER FROM THE NIPPLE COVER. PLACE THE COVER OVER YOUR NIPPLE AND GENTLY PRESS IT IN PLACE. SMOOTH OUT ANY BUBBLES FROM THE EDGE. CLEAN WITH WATER AND MILD SOAP.

MATERIAL: 100% SILICONE



AC021 INVISIBLE LIFT BRA  
BLUSH  
S/M - L/XL

WILL LIFT YOUR BREASTS WITHOUT WEARING A BRA

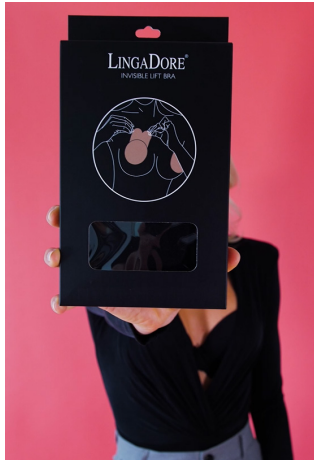
## HOW TO USE:

CLEAN YOUR SKIN, REMOVE THE PROTECTIVE LINER FROM THE INVISIBLE LIFT BRA, PLACE THE COVER OVER YOUR BREAST, AND GENTLY PRESS IT IN PLACE. SMOOTH OUT ANY BUBBLES FROM THE EDGE. CLEAN WITH WATER AND MILD SOAP.

MATERIAL: 100% SILICONE



# Nipple Covers & Lift Solutions



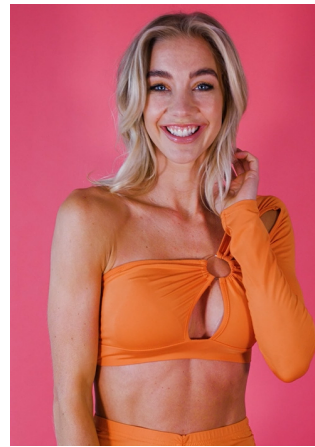
**AC029 INVISIBLE LIFT BRA**  
*BLACK & BLUSH S/M - L/XL*

MADE OF A SMOOTH AND COMFORTABLE MATERIAL THAT COMPLETELY COVERS THE NIPPLE AND IS INVISIBLE UNDER YOUR CLOTHES. FOR A NICE LIFTED EFFECT!

## HOW TO USE:

CLEAN YOUR SKIN, REMOVE THE PROTECTIVE LINER FROM THE INVISIBLE LIFT BRA, PLACE THE COVER OVER YOUR BREAST, AND GENTLY PRESS IT IN PLACE. SMOOTH OUT ANY BUBBLES FROM THE EDGE. CLEAN WITH WATER AND MILD SOAP.

MATERIAL: 88% NYLON - 12% SPANDEX (WITH MEDICAL SILICONE GLUE)



**AC045 SILICONE BRA CUPS**  
*BLUSH*  
*S/M - L/XL*

IDEAL FOR CLOTHING WHERE YOU DON'T WANT TO SEE SHOULDER STRAPS OR A BRA BAND ON YOUR BACK. LIFTS AND ENLARGES YOUR BREASTS.

## HOW TO USE:

CLEAN YOUR SKIN, REMOVE THE PROTECTIVE LINER FROM THE SILICONE BRA CUPS, PLACE THE COVER OVER YOUR BREAST, AND GENTLY PRESS IT IN PLACE. SMOOTH OUT ANY BUBBLES FROM THE EDGE. CLEAN WITH WATER AND MILD SOAP.

MATERIAL: 100% SILICONE



# Nipple Covers & Lift Solutions



AC055 INVISIBLE LIFT BRA  
BLUSH  
B - F

LIFTS YOUR BREASTS.

#### HOW TO USE:

CLEAN YOUR SKIN, REMOVE THE PROTECTIVE LINER FROM THE SILICONE BRA CUPS, PLACE THE COVER OVER YOUR BREAST, AND GENTLY PRESS IT IN PLACE. SMOOTH OUT ANY BUBBLES FROM THE EDGE

MATERIAL: 100% SILICONE



AC035 SOFT BRA PADS  
BLACK & BEIGE  
M - XXL

LIFTS YOUR BREASTS.

#### HOW TO USE:

CLEAN YOUR SKIN, REMOVE THE PROTECTIVE LINER FROM THE SOFT BRA CUPS, PLACE THE COVER OVER YOUR BREAST, AND GENTLY PRESS IT IN PLACE. SMOOTH OUT ANY BUBBLES FROM THE EDGE.

MATERIAL: 88% NYLON - 12% SPANDEX



# Push-Ups



## AC020 STICKY PUSH UP PADS

BLUSH  
ONE SIZE

FOR A NATURAL PUSH-UP EFFECT.

### HOW TO USE:

PASTE THE PADS INSIDE THE OUTER EDGE OF THE BRA OR BIKINI, TO CREATE MORE CLEAVAGE.  
CLEAN WITH WATER AND MILD SOAP.

MATERIAL: 85% NYLON, 15% ELASTHAN  
LINING 100% COTTON



## AC022 SILICONE INSERT

BLUSH  
ONE SIZE

CREATES A PUSH-UP EFFECT.

### HOW TO USE:

PUT THE PADS INSIDE THE OUTER EDGE OF THE BRA OR BIKINI TO CREATE MORE CLEAVAGE.  
CLEAN WITH WATER AND MILD SOAP.

MATERIAL: 100% SILICONE



# Push-Ups



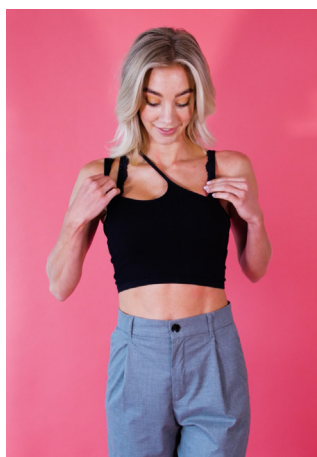
**AC071 ADHESIVE PUSH-UP BRA**  
*BLACK & BLUSH*  
A - E

CREATE THE CLEAVAGE OF YOUR DREAMS.

## HOW TO USE:

CLEAN AND DRY YOUR SKIN REMOVE THE PROTECTIVE LINER FROM THE ADHESIVE BRA  
REPEAT THIS FOR THE OTHER SIDE. THE DRAWSTRING FRONT CLOSURE WILL ENHANCE THIS PUSH-UP EFFECT BY PULLING THE BREASTS TOGETHER, CREATING THE BEST CLEAVAGE POSSIBLE INSTANTLY. CLEAN WITH WATER AND MILD SOAP.

MATERIAL: 88% NYLON, 12% SPANDEX  
(WITH MEDICAL SILICONE GLUE)



**AC109 ADHESIVE BRA**  
*BLACK & BLUSH*  
A - D

THE TWO SEPARATE CUPS ARE ADHERED TO THE BREASTS AND CLOSE IN THE MIDDLE, CREATING A BEAUTIFUL PUSH-UP EFFECT.

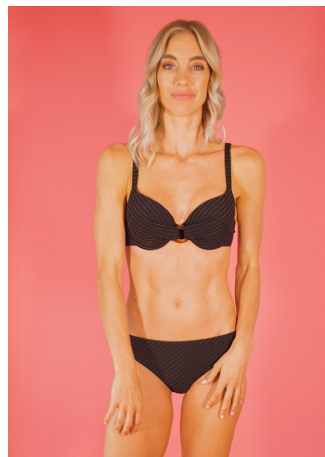
## HOW TO USE:

CLEAN YOUR SKIN, REMOVE THE PROTECTIVE LINER FROM THE ADHESIVE BRA, PLACE THE COVER OVER YOUR BREAST, AND GENTLY PRESS IT IN PLACE. SMOOTH OUT ANY BUBBLES FROM THE EDGE. CLEAN WITH WATER AND MILD SOAP.

MATERIAL: 88% NYLON, 12% SPANDEX  
(WITH MEDICAL SILICONE GLUE)



# Push-Ups



AC018 TRIANGLE PUSH-UP (WATERPROOF)  
BLACK & BLUSH  
ONE SIZE

FOR A NATUREL PUSH-UP EFFECT. SUITABLE FOR BRAS AND BIKINIS.

#### HOW TO USE:

PASTE THE PADS INSIDE THE OUTER EDGE OF THE BRA OR BIKINI, TO CREATE MORE CLEAVAGE.

MATERIAL: 88% NYLON, 12% ELASTHAN  
LINING: 100% COTTON



AC080 PUSH-UP PANTS  
BLACK & BLEIGE  
M - L

THIS SOFT AND COMFORTABLE PUSH-UP BRIEF GIVES YOUR BOTTOM A SUBTLE LIFT EFFECT.

- SEAMLESS
- LOW WAIST
- ADJUSTABLE BUCKLE
- HONEYCOMB BREATHABLE FABRIC
- THICKNESS: 2CM

MATERIAL: CROTCH: 85% POLYESTER 15% COTTON  
COMPOSITION: 87% NYLON, 13% SPANDEX



LINGADORE - MENDELS FASHION GROUP  
HELMKAMP 46F  
7091 HR DINXPERLO  
THE NETHERLANDS

T: +31 (0)315 65 3202  
INFO@LINGADORE.COM

B2B.LINGADORE.COM  
WWW.LINGADORE.COM

© 2025 BY LINGADORE

*SUBJECT TO MISPRINTS AND ERRORS. MODIFICATIONS ARE POSSIBLE AT ANY TIME.*









B2B.LINGADORE.COM

